



EuroJack-Up 5025 | Jack-up barge

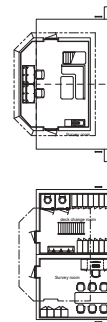
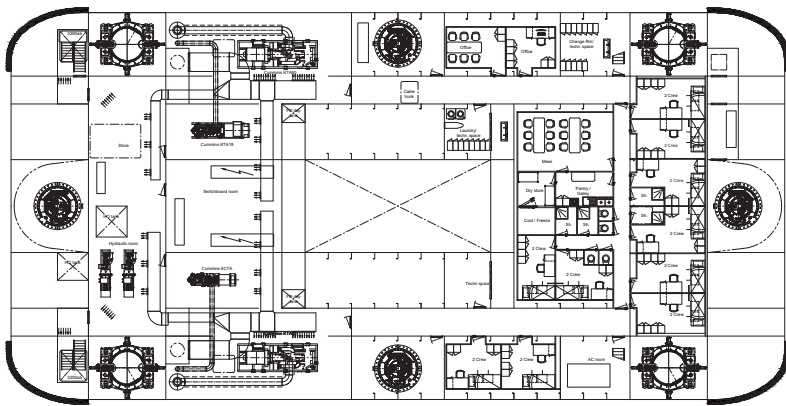
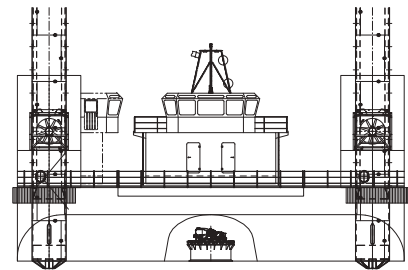
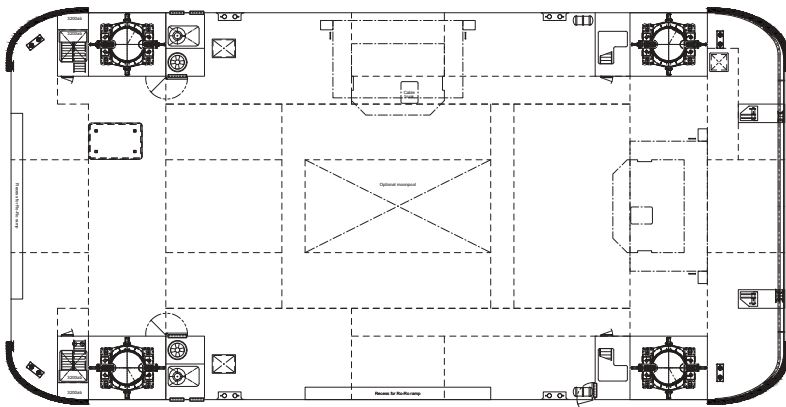
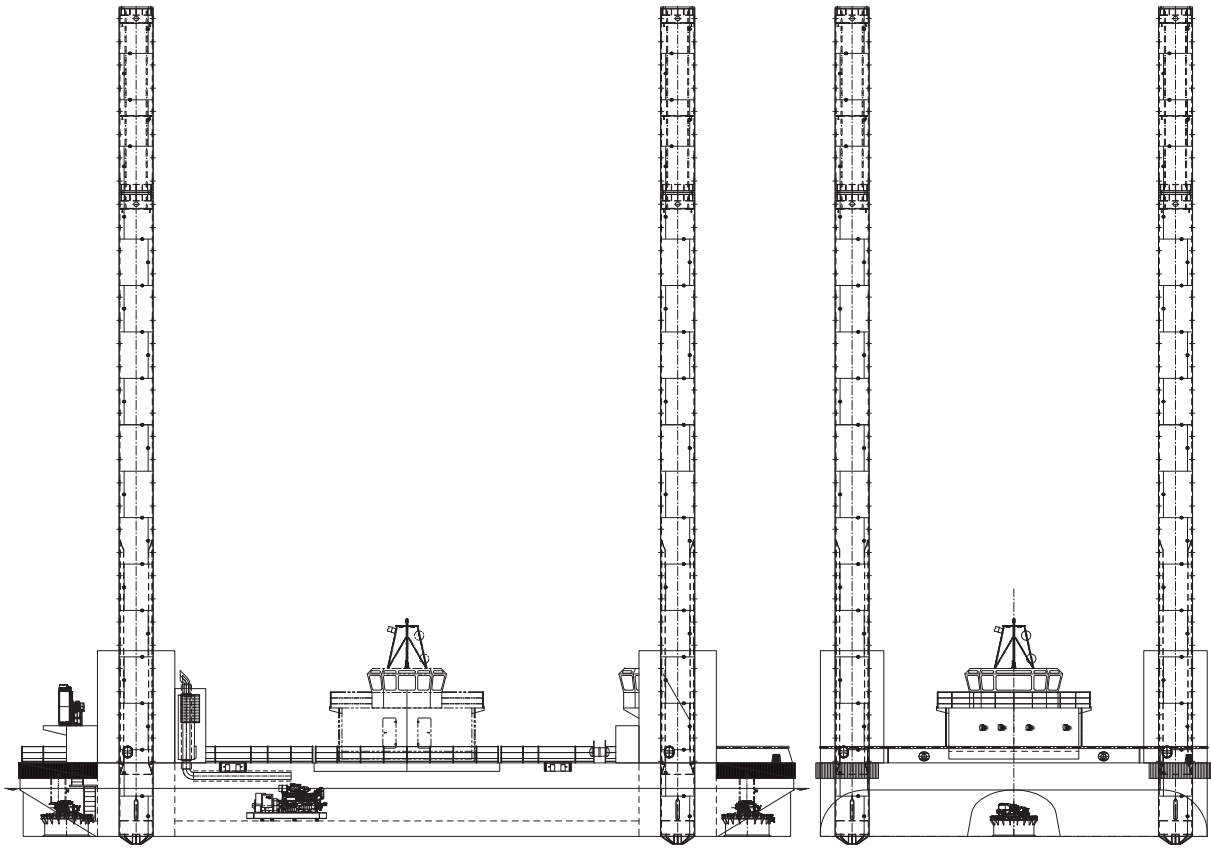


The EuroJack-Up is a multi-purpose jack-up barge design, which offers solutions to all kinds of maritime operations such as offshore construction. It can be modified to fit your demands. This could either be the installation of propulsion, or the installation of a heavy lift crane to fit your project.



CLASSIFICATION	Bureau Veritas I ✕ HULL • MACH Offshore Self Elevating Unit – assisted propulsion, Coastal Area, Transit over 20 miles from shore with HS < 2.5m
DIMENSIONS	
LENGTH O.A.	50,00 meters
BREADTH MLD.	25,00 meters
DEPTH AT SIDE	4,75 meters
DRAFT	3,10 meters
OPERATING CONDITIONS	
MAX. DESIGN WATER DEPTH	39,90 meters
CAPACITY	
FUEL OIL	70 m ³
HYDRAULIC OIL	35 m ³
PROPULSION	
TOTAL POWER	2000 kW
PROPULSION	4 x pumpjets electrical driven
AUXILIARIES	
TOTAL GENERATOR POWER	2900 kW
E-POWER AVAILABLE ON DECK	450 kW
JACK-UP SYSTEM	Single acting w/o freefall
ACCOMMODATION	
FACILITIES	Air-conditioned accommodation for 20 persons.

OPERATING CONDITIONS	
MAX. DESIGN WATER DEPTH	39,90 meters
SPUD LEGS	
LENGTH	66,00 meters
DIAMETER	2,20 meters
JACKING PARAMETERS	
JACKING SPEED	15 m/hour
VARIABLE LOAD	1000 tons
PRELOAD FORCE PER LEG	1250 tons
PARAMETERS AT 30M DEPTH	
CURRENT	1,5 m/sec
WIND VELOCITY(SURVIVAL)	16 m/sec (25 m/sec)
SIGNIF. WAVE HEIGHT (SURVIVAL)	3,0 meters (5,0 meters)
MAX. WAVE HEIGHT (SURVIVAL)	5,58 meters (9,30 meters)
PARAMETERS AT 35M DEPTH	
CURRENT	1,5 m/sec
WIND VELOCITY (SURVIVAL)	25 m/sec
SIGNIF. WAVE HEIGHT (SURVIVAL)	2,0 meters
MAX. WAVE HEIGHT (SURVIVAL)	3,72 meters
OPTIONS	
POSITIONING SYSTEM	4-point mooring system
ADDITIONAL ACCOMMODATION	Modular units
SPUD LEG CONFIGURATION	Spud cans
FIREFIGHTING SYSTEM	Certified fifi system, demountable on deck



EuroJack-Up 5025 | Jack-up barge

For more information, please contact us on:

T +31 (0)184 621 423 E info@neptunemarine.com W www.neptunemarine.com

Version: V.01

