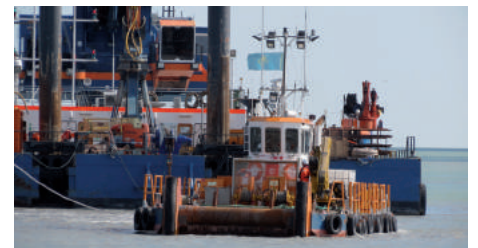




## Modular EuroCarrier 2107 | Workboat



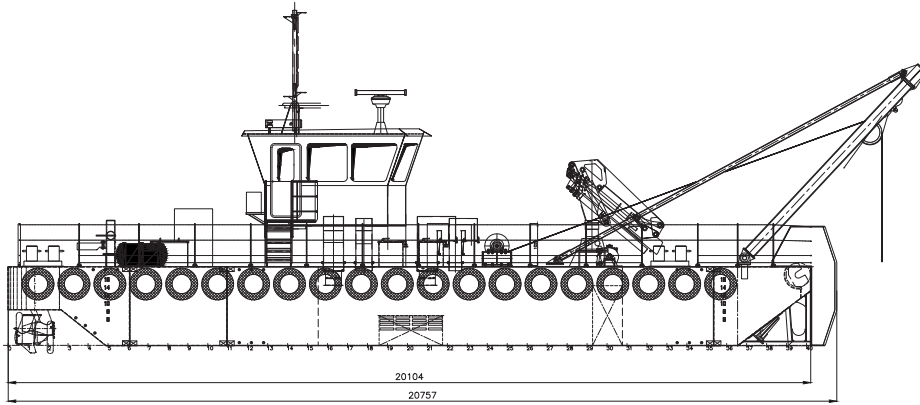
The robust, efficient and flexible design of the Modular EuroCarrier makes it the right vessel for various activities, including anchor handling, pushing and survey. The modular EuroCarrier is easy to transport to any location.



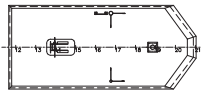
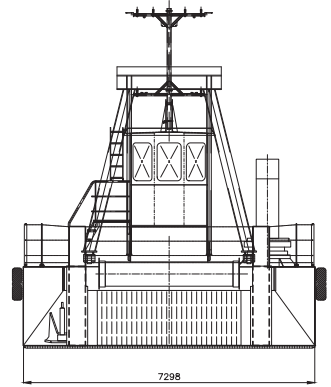
<b>GENERAL</b>	
TYPE VESSEL	Modular EuroCarrier Multi purpose vessel
BASIC FUNCTIONS	Pushing, mooring, anchor handling, towing and survey
CLASSIFICATIONS	Bureau Veritas I + HULL • MACH Special Service / Workboat Coastal area
<b>DIMENSIONS</b>	
LENGTH O.A.	20.76 meters
BREADTH MLD.	7.32 meters
DEPTH AT SIDE	1.98 meters
DRAFT	1.00 meters
GROSS TONNAGE	72
<b>PERFORMANCE</b>	
SPEED	6.8 knots (approx.)
BOLLARD PULL	5.1 tons
<b>PROPULSION</b>	
MAIN ENGINES	3x SCANIA DI 12 70 M
TOTAL POWER	771 kW at 1800 RPM
<b>AUXILIARIES</b>	
GENERATOR SET	Hatz 3M41
GENERATOR POWER	22 kVa

<b>TANKS</b>	
FUEL OIL	3 x 2.7 m3
HYDRAULIC OIL	3 x 1 m3
FRESH WATER	1 x 0.1 m3
SEWAGE WATER	1 x 0.15 m3
<b>DECK LAY-OUT</b>	
ANCHOR / LENGTH CHAIN	1 x 195 kg / 175 meters
ANCHOR HANDLING WINCH	2 x 25 tons
DECK CRANE	Hella HLRM 25/35
DECK PROTECTION	Azobé deck covering
TOWING HOOK	SWL 15 tons
A-FRAME	15 tons
FENDERING	Wood pushbow fendering fore ship
<b>ACCOMMODATION</b>	
FACILITIES	Wheelhouse, restroom and store unit.
CLIMATE CONTROL	Air-conditioned wheelhouse
<b>SAFETY EQUIPMENT</b>	
Life saving equipment for 6 persons	
<b>RADIO &amp; NAVIGATION</b>	
GMDSS SEA AREA A2	2x GPS, 2x AIS transponder, Navtex, AIS display, Echosounder, VHF DSC, radar and MF/HF TU transmitter.
4 POINT MOORING	

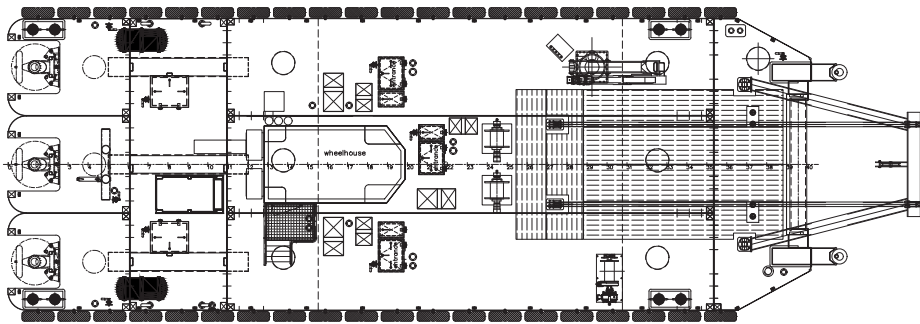
SIDEVIEW



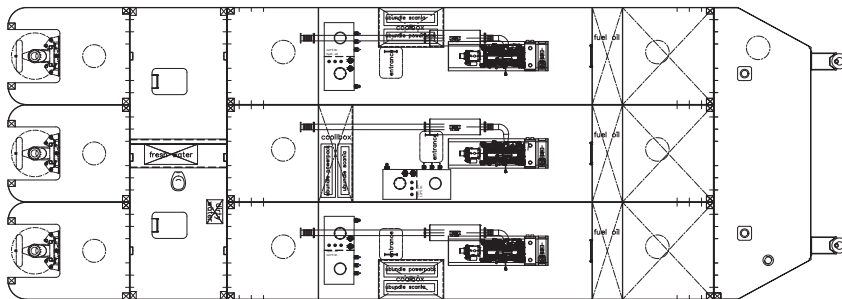
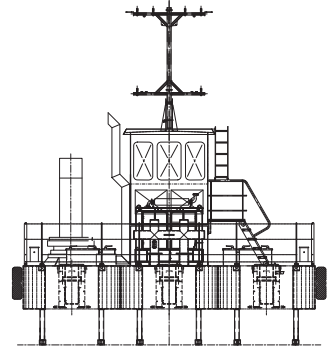
FRONTVIEW



TOPVIEW



AFTVIEW



## Modular EuroCarrier 2107 | Workboat

For more information, please contact us on:

T +31 (0)184 621 423 E [info@neptunemarine.com](mailto:info@neptunemarine.com) W [www.neptunemarine.com](http://www.neptunemarine.com)

Version: V.01

