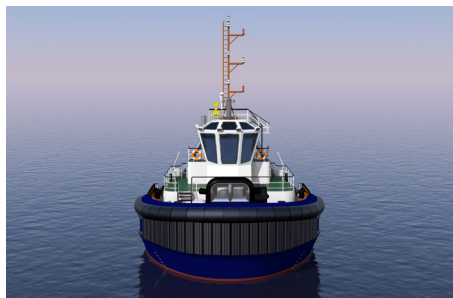




US Tug 2412 | Harbor & Terminal Tug

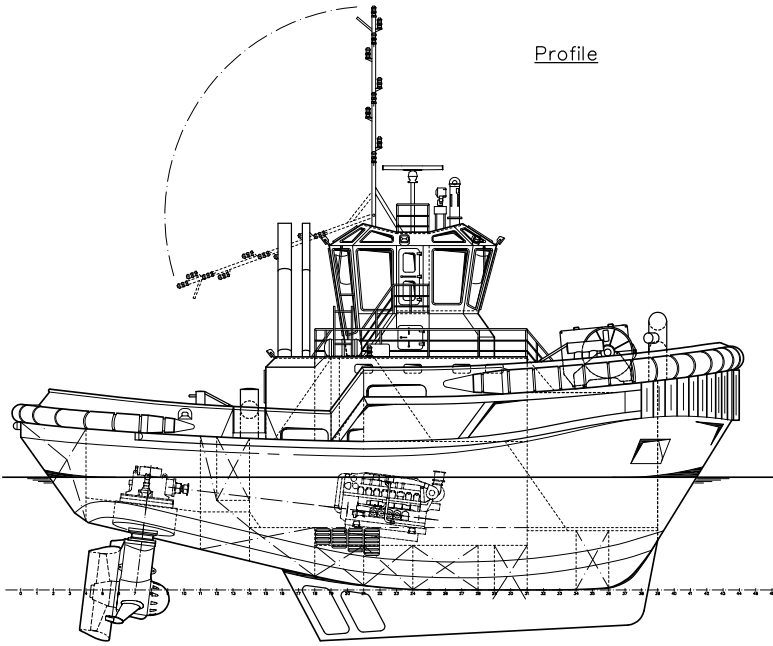


The US Tug is a clever and innovative harbor tug design, based on years of operational experience. The result: a sustainable, cost-effective and efficient US Tug for port and terminal operations with optimal performances under every condition.

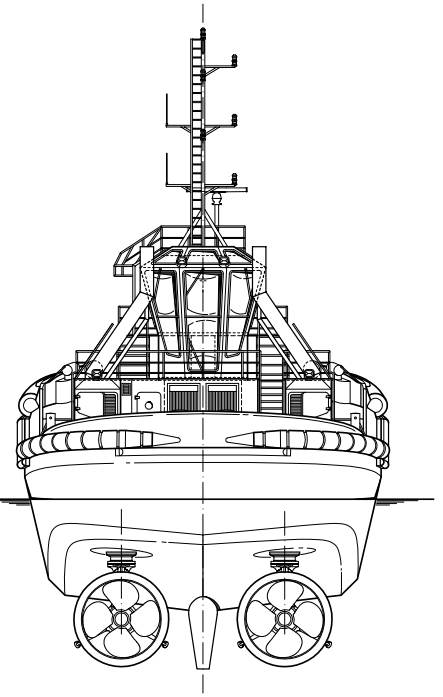


CLASSIFICATION	Bureau Veritas I ✘ HULL • MACH • AUT-UMS, Unrestricted Navigation, Multi-Purpose / Special Service GMDSS Area A2
DIMENSIONS	Approx.
LENGTH O.A.	80.8 ft 24,63 m
BREADTH MLD.	39 ft 12,0 m
DEPTH AT SIDE	16.4 ft 5,00 m
DRAFT	18 ft 5,50 m
GROSS TONNAGE	< 500
PERFORMANCES	
SPEED AHEAD	12 knots
SPEED ASTERN	12 knots
BOLLARD PULL AHEAD	max. 75 tons
BOLLARD PULL ASTERN	max. 68 tons
PROPULSION	
MAIN ENGINES	High-speed or medium-speed engines
THRUSTERS	2x FPP Ø 102 in (2600 mm) with integrated slipping clutch
AUXILIARIES	
TOTAL E-POWER	2x 80 hp 2x 60 kW
HYDRAULIC SYSTEM	Main engine driven

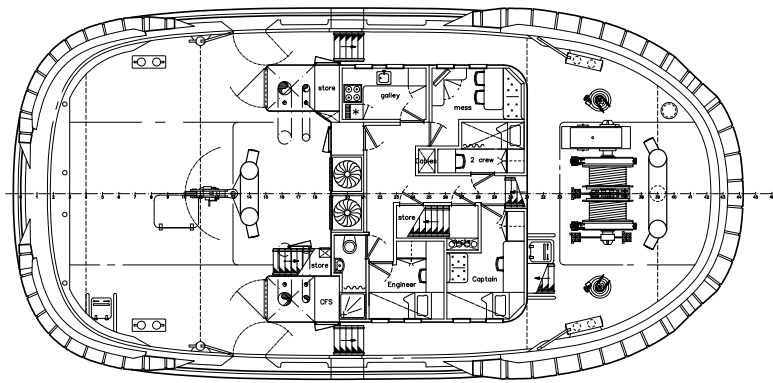
TANKS	
FUEL OIL	approx. 18,490 gals 70 m ³
FRESH WATER	approx. 2,375 gals 9 m ³
DECK LAY-OUT	
FORWARD TOWING WINCH	Hydraulic driven, double drum 2x 656 ft (2x 200 m) synthetic rope
HOLDING POWER	150 tons at 1 st layer
PULLING FORCE	30 tons at 49 ft /min (15 m/min)
SLACK ROPE SPEED	148 ft/min 45 m/min
FENDERING	D-fendering at the side, at the bow cil.-fendering above the W-fendering, cil.-fendering at the stern transom corners
ACCOMMODATION	
FACILITIES	Air-conditioned accommodation for 4 persons
OPTIONS	
AFT TOWING WINCH	Hydraulic driven, single drum
DECK CRANE	Heila HLRM 20-3S
TOWING HOOK	Mampaey 100 tons SWL
EXTERNAL FIRE FIGHTING	FiFi class 1
MOB	Inflatable type with outboard engine



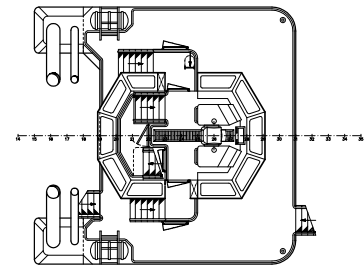
Profile



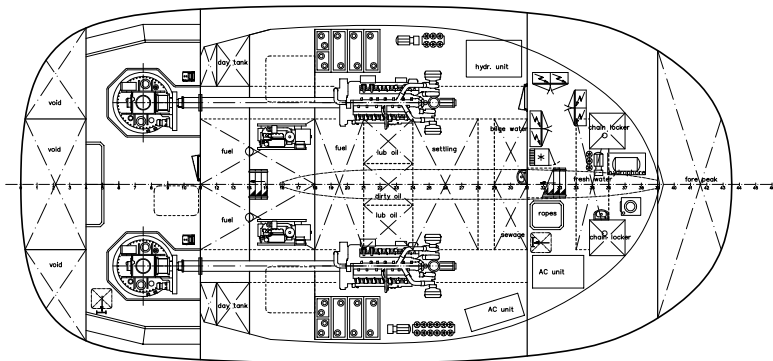
Main deck



Bridge deck



Below main deck



US Tug 2412 | Harbor & Terminal Tug

For more information, please contact us on:

T +1 (346) 708 8070 E info@neptuneamericas.com W www.neptuneamericas.com

