

# MultiCarrier 1206 | Workboat

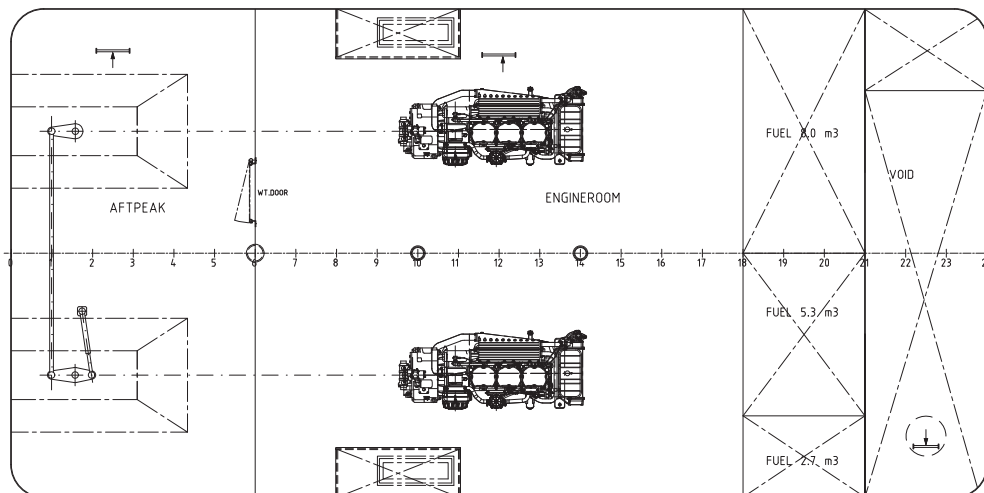
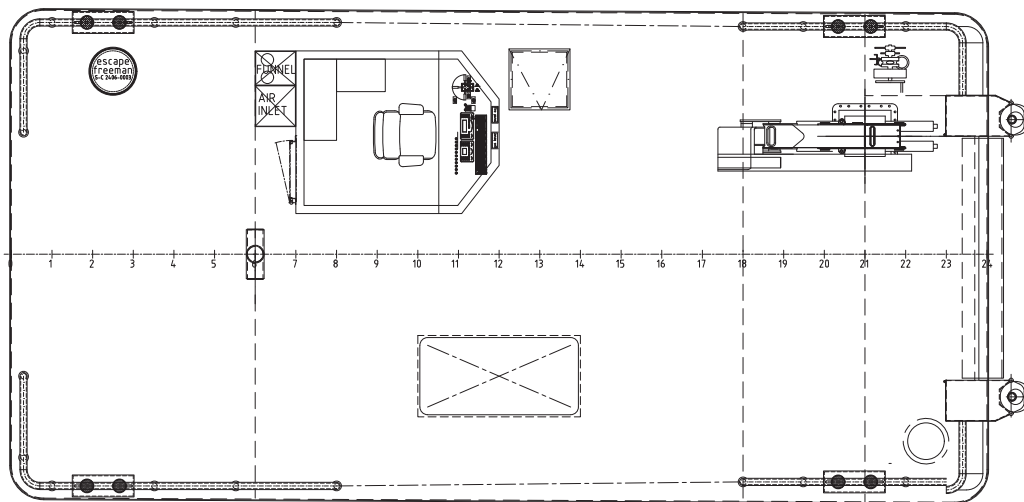
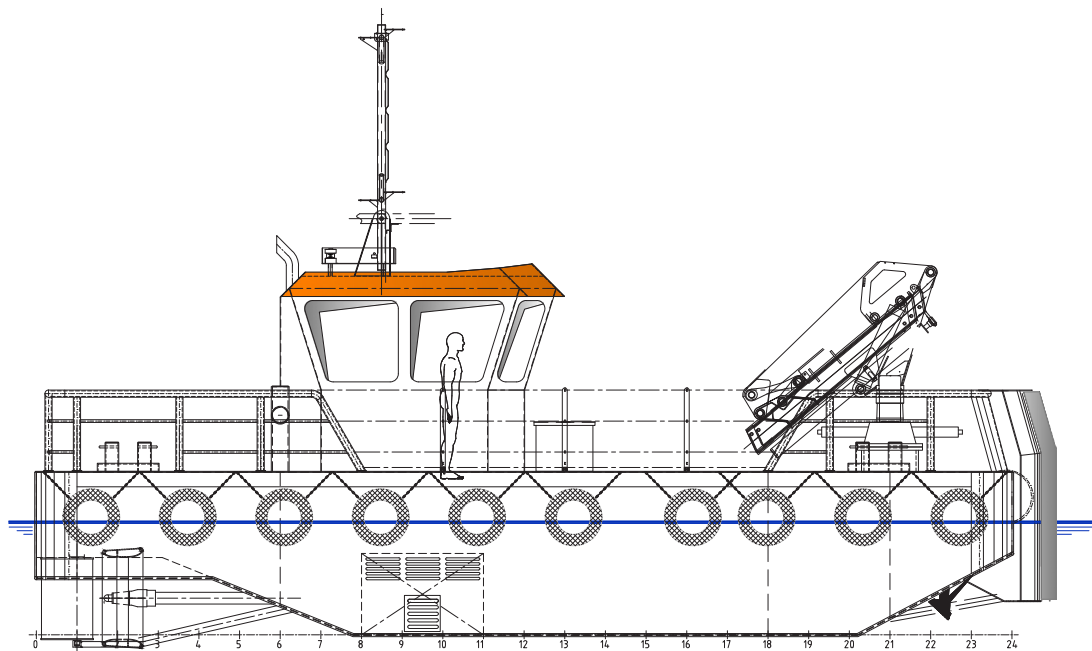


The robust, efficient and flexible design of the MultiCarrier makes it one of the best vessels for anchor handling, dredging support and survey activities. The MultiCarrier can be adapted to perfectly fit any project within a short time.



<b>CLASSIFICATION</b>	Bureau Veritas I ✘ HULL • MACH • AUT-UMS, Coastal Area Multi-Purpose/Special Service Ship
<b>DIMENSIONS</b>	
LENGTH O.A.	12,60 meters
BREADTH MLD.	6,04 meters
DEPTH AT SIDE	1,80 meters
DRAFT	1,40 meters
<b>PERFORMANCES</b>	
SPEED	7 knots (approx.)
BOLLARD PULL	7 tons
<b>PROPULSION</b>	
MAIN ENGINES	2x Caterpillar C9.3
TOTAL POWER	750 hp at 1800 RPM
PROPELLERS	1000 mm diameter in nozzle
<b>AUXILIARIES</b>	
GENERATOR SET	Approx. 50 kW
AC UNIT COMPRESSOR	Split unit

<b>TANKS</b>	
FUEL OIL	16 m <sup>3</sup>
<b>DECK LAY-OUT</b>	
DECK CRANE FORWARD	Heila HLM 25-2S
DECK	Azobé deck covering
TOWING PINS	Fore ship set towing pins manual
FENDERING	Tire fendering at sides, pushbow fendering fore ship
<b>FACILITIES</b>	
WHEELHOUSE	Air-conditioned wheelhouse
SAFETY	LSA for 4 persons
<b>OPTIONS</b>	
DECK CRANE AFT	Heila HLM 25-2S
CAPSTANS	3T hydraulic driven
DECKWINCH	15 T hydraulic driven
TOWING HOOK	Mampaey 8 tons SWL
ELECTRICAL SYSTEM	240/400 V



## MultiCarrier 1206 | Workboat

For more information, please contact us on:

T +31 (0)184 621 423 E [info@neptunemarine.com](mailto:info@neptunemarine.com) W [www.neptunemarine.com](http://www.neptunemarine.com)

Version: V.01