



MultiCarrier 1908 | Workboat

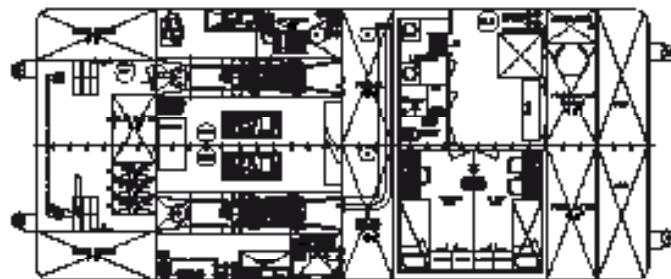
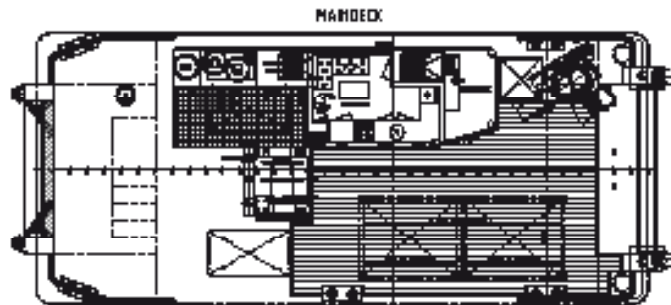
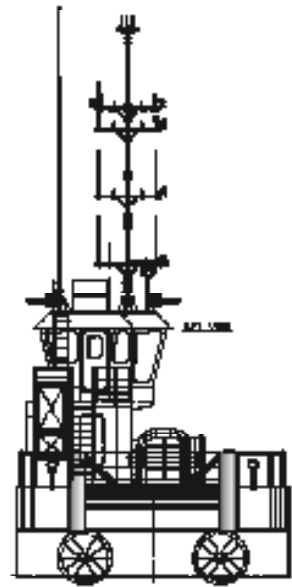
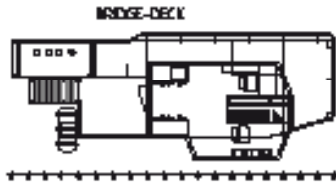
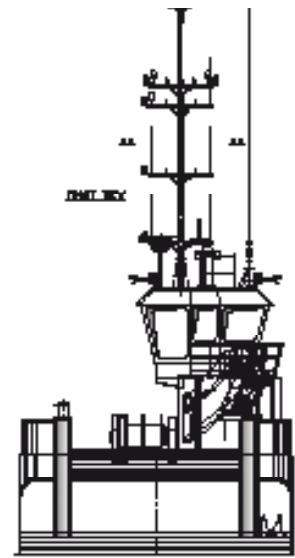
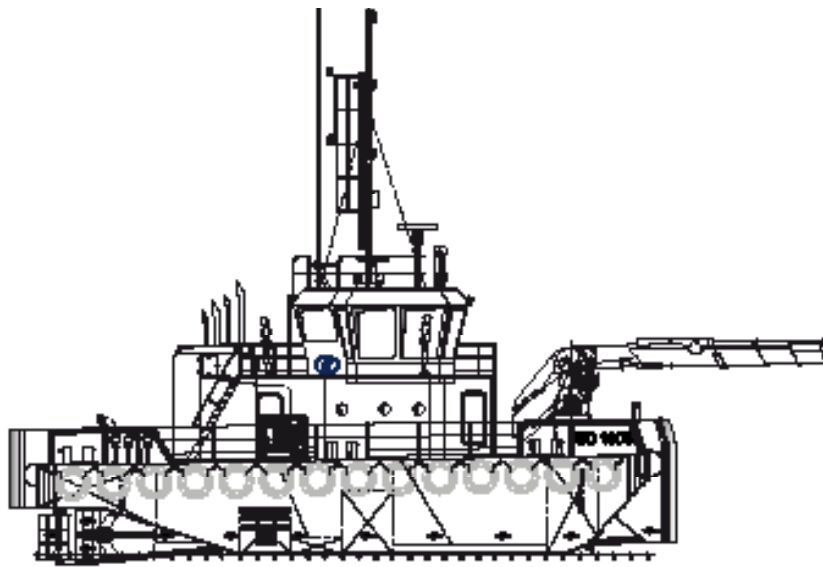


The robust, efficient and flexible design of the EuroCarrier makes it one of the best vessels for anchor handling, dredging support and survey activities. The EuroCarrier can be adapted to perfectly fit any project within a short time.



CLASSIFICATION	Bureau Veritas I  HULL • MACH • AUT-UMS, Coastal Area, Multi-Purpose/Special Service Ship GMDSS Area A1
DIMENSIONS	
LENGTH O.A.	19,50 meters
BREADTH MLD.	8,00 meters
DEPTH AT SIDE	2,60/2,90 meters
DRAFT	1,90 meters
GROSS TONNAGE	107
NET TONNAGE	32
PERFORMANCES	
SPEED	9 knots (approx.)
BOLLARD PULL	10 tons
PROPULSION	
MAIN ENGINES	2 x Volvo D13
TOTAL POWER	2 x 331 kW at 1800 RPM
PROPELLERS	1350 mm diameter in nozzle
AUXILIARIES	
GENERATOR SETS	2 x Volvo D5A TA
GENERATOR POWER	2x 85 ekW @ 1500 RPM
HYDRAULIC POWER PACK	Electrical driven

TANKS	
FUEL OIL	22 m ³
FRESH WATER	37 m ³
DECK LAY-OUT	
ANCHOR HANDLING / TOWING WINCH	Split drum type
PULLING FORCE	15 tons at 1 st layer
HAULING SPEED	7m/min – 21m/min
DECK CRANE FORWARD	Heila HLRM 65-3S
DECK	Azobé deck covering
TOWING HOOK	Mampaey 20 tons SWL
TOWING PINS	Fore ship set towing pins manual
FENDERING	Tire fendering at sides, pushbow fendering fore- and aft ship
ACCOMMODATION	
FACILITIES	Day accommodation for 3-crew
OPTIONS	
DECK CRANE AFT	Heila HLRM 25-2S
CAPSTANS	5 ton, hydraulic driven
DAY AND NIGHT ACCOMMODATION	Air-conditioned accommodation for 3 crew members



MultiCarrier 1908 | Workboat

For more information, please contact us on:
 T +31 (0)184 621 423 E info@neptunmarine.com W www.neptunmarine.com
 Version: V.01

