



MultiCarrier 2209 | Workboat

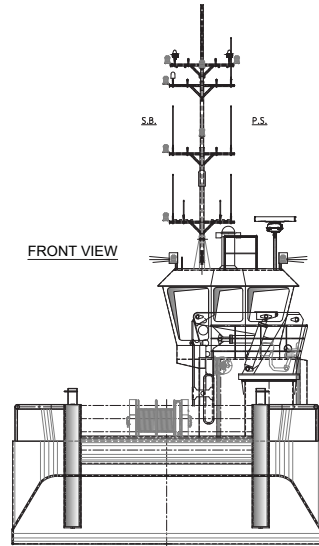
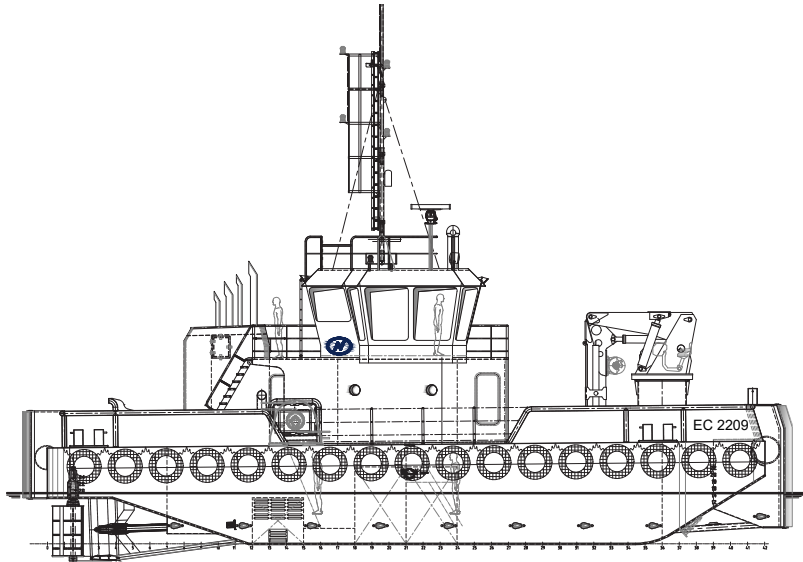


The robust, efficient and flexible design of the MultiCarrier makes it one of the best vessels for anchor handling, dredging support and survey activities. The MultiCarrier can be adapted to perfectly fit any project within a short time.

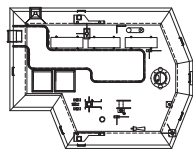


CLASSIFICATION	Bureau Veritas I  HULL • MACH • AUT-UMS, Multi-Purpose/Special Service Ship, Coastal Area GMDSS Area A1
DIMENSIONS	
LENGTH O.A.	21,60 meters
BREADTH MLD.	9,04 meters
DEPTH AT SIDE	2,80/3,00 meters
DRAFT	2,00 meters
GROSS TONNAGE	135
NET TONNAGE	40
PERFORMANCES	
SPEED	10 knots
BOLLARD PULL	15 tons
PROPULSION	
MAIN ENGINES	2x Caterpillar C18
TOTAL POWER	894 kW at 1800 RPM
PROPELLERS	1350 mm diameter in nozzle
AUXILIARIES	
GENERATOR SETS	2x Caterpillar C4.4, 1 radiator cooled, 1 box cooled
TOTAL E-POWER	186 kW
HYDRAULIC POWER PACK	2x 55 kW – Electrical driven

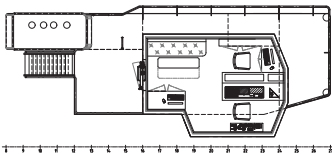
TANKS	
FUEL OIL	56 m ³
FRESH WATER	51 m ³
DECK LAY-OUT	
ANCHOR HANDLING / TOWING WINCH	Split drum type
PULLING FORCE	50 tons at 1 st layer
HAULING SPEED	7m/min- 21m/min
TUGGER WINCH	Single drum type
PULLING FORCE	10 tons at 1 st layer
DECK CRANE FORWARD	HS AKC 185-HE4
DECK	Azobé deck covering
TOWING HOOK	Mampaey 20 tons SWL
TOWING PINS	Fore ship set towing pins manual
FENDERING	Tire fendering at sides, pushbow fendering fore- and aft ship
ACCOMMODATION	
FACILITIES	Airconditioned accommodation for up to 6 persons



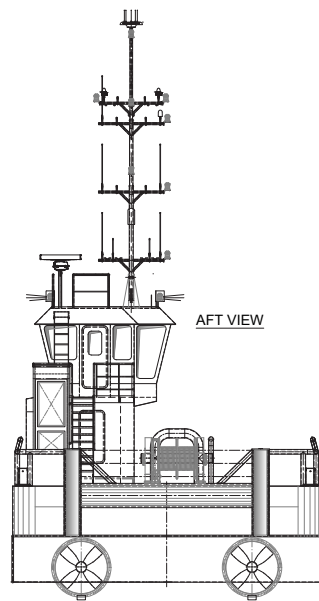
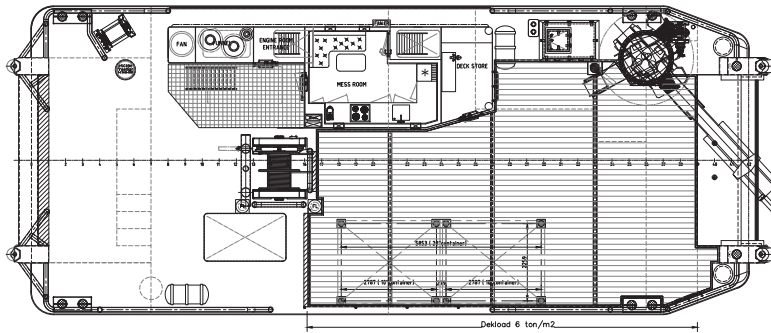
TOPDECK



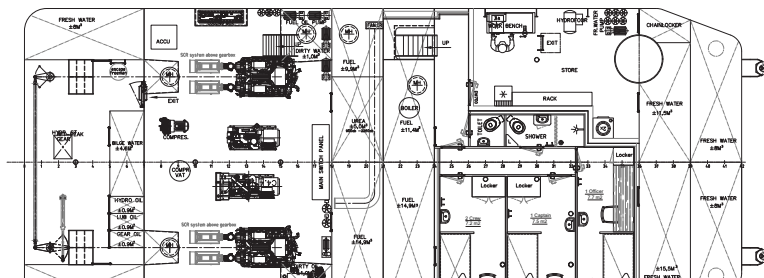
BRIDGE-DECK



MAINDECK



AFT VIEW



MAIN DIMENSIONS:
 Length o.d. 21,60 mtr
 Length mid. 21,00 mtr
 Length freeboard 20,83 mtr
 Beam o.d. 9,04 mtr
 Breadth mid. 9,00 mtr
 Depth at side 2,80/3,00mtr

PROPULSION:
 2x MAN D2862 – 662 kW 2x Propellor 1500 mm

GENSETS
 1x Caterpillar C 4.4 Box Cooled 107 kVA
 1x Caterpillar C 4.4 Rad Cooled 107 kVA

DECK EQUIPMENT:
 HYDRAULIC CRANE: HLRM 140-4S
 HYDRAULIC HANDLING WINCH: 50T
 HYDRAULIC TUGS WINCH: 10T

ANCHOR EQUIPMENT:
 NR 600, Chapter 5, Section 4, Article 2, Equipment Number
 2x Anchor Very high holding power 231 Kg (order 236 Kg)
 2x Chain Q2 – Diameter ø 17,5 mm Length 137,5 mtr

CLASSIFICATION:
 BUREAU VERITAS: 1 HULL ● MACH ● AUT-UMS
 Coastal Area
 Deck plan



MultiCarrier 2209 | Workboat

For more information, please contact us on:

T +31 (0)184 621 423 E info@neptunemarine.com W www.neptunemarine.com

Version: V.01

