



MultiCarrier 2611 | Tidal Pioneer



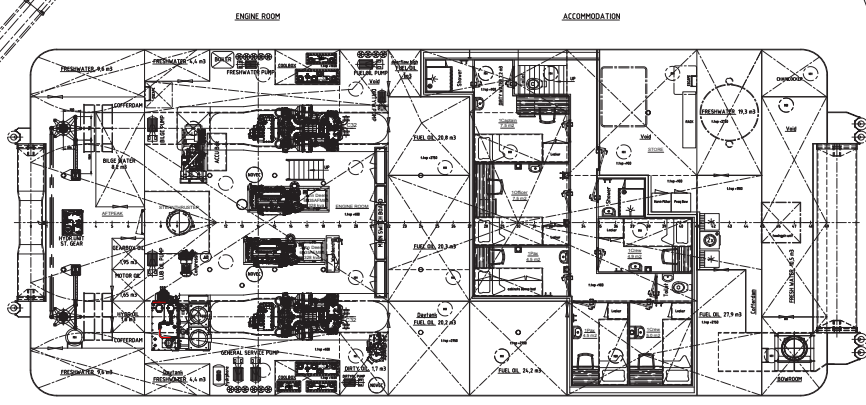
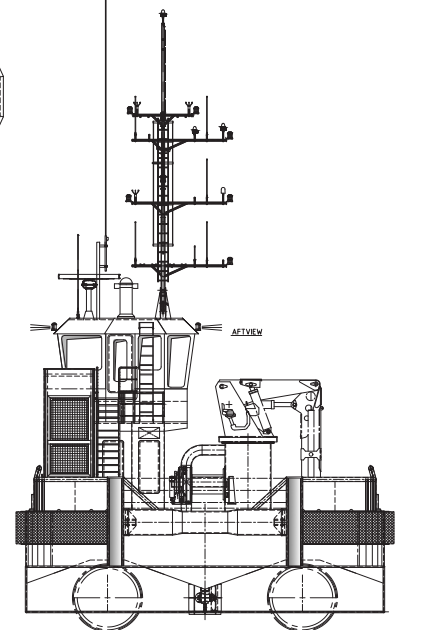
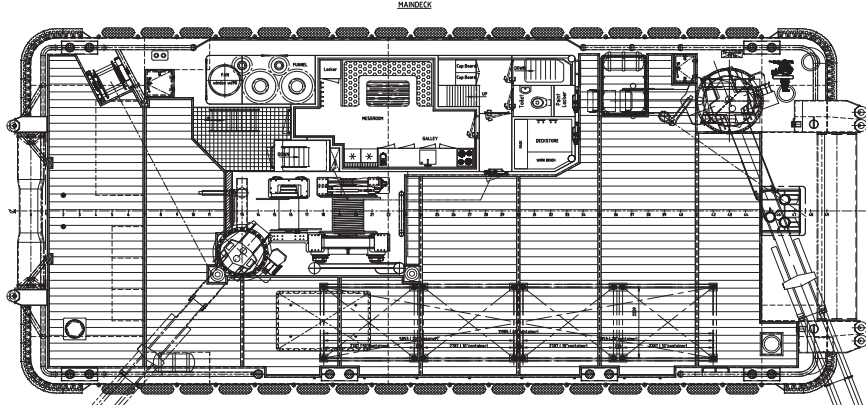
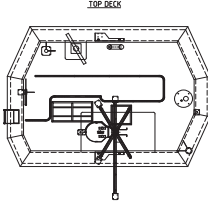
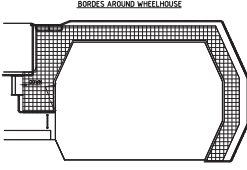
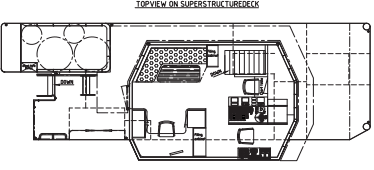
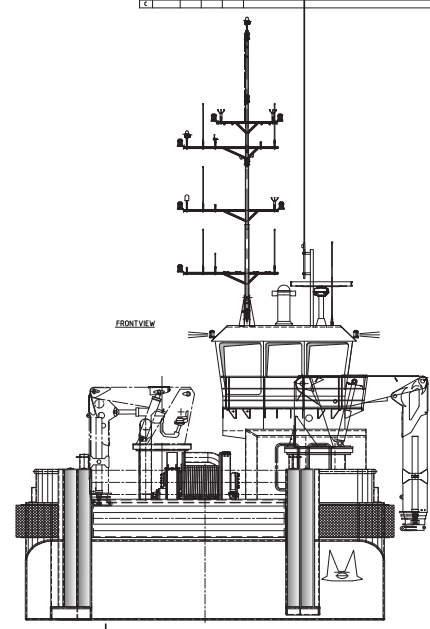
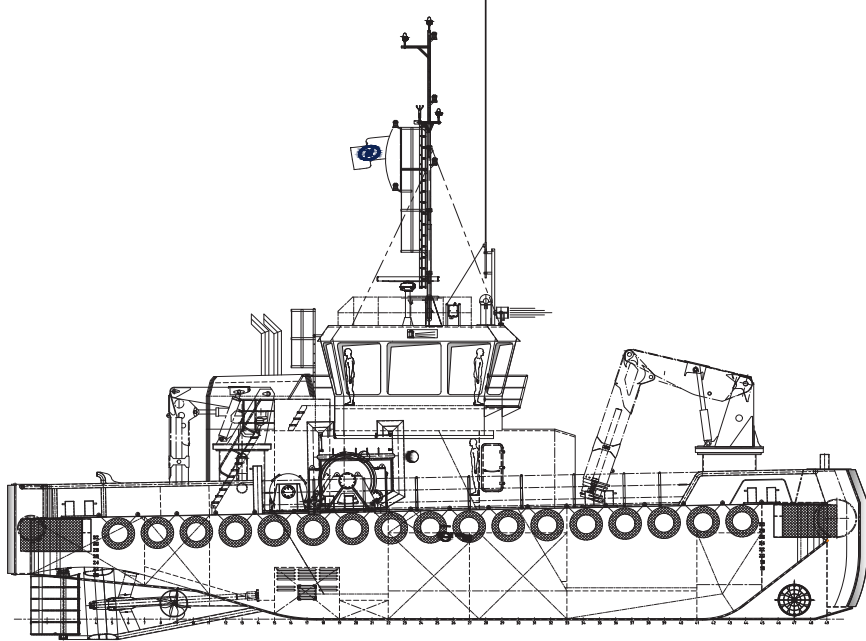
The robust, efficient and flexible design of the MultiCarrier makes it one of the best vessels for anchor handling, dredging support and survey activities. The MultiCarrier can be adapted to perfectly fit any project within a short time.



CLASSIFICATION	Bureau Veritas I ✘ HULL • MACH • Aut-ums • Dynapos AM/AT • Near Coastal Class 1, Tug / Special Service GMDSS Area A3 Class 1 Canadian
DP FLAG	
OWNER	Sustainable Marine Energy (Canada)
DATE OF BUILT	August 2021
DIMENSIONS	
LENGTH O.A.	26,48 meters
BREADTH MLD.	11,00 meters
DEPTH AT SIDE	3,20/3,70 meters
DRAFT	2,61 meters
GROSS TONNAGE	179
NET TONNAGE	134
RULE LENGTH	22,9 meters
PERFORMANCES	
SPEED	10 knots
BOLLARD PULL	34,7 tons
PROPULSION	
MAIN ENGINES	2x Caterpillar C32 ACERT TIER III
TOTAL POWER	1940 kW at 1800 RPM
PROPELLERS	1850 mm diameter in nozzle
AUXILIARIES	
GENERATOR SETS	Volvo penta D13
TOTAL E-POWER	2 x 360 KW
HYDRAULIC POWER PACK	2x 90 kW
BOW THRUSTER	Tunnel thruster aft, 200 KW Tunnel thruster fwd, 250 KW

TANKS	
FUEL OIL	107 m ³
FRESH WATER	67 m ³
4-POINT MOORING SYSTEM	4 hydraulic winches
CAPABILITY	25 tonnes
WIRE CAPACITY	100 m steel + 150 m dyneema
DECK LAY-OUT	
ANCHOR HANDLING WINCH	150 tons holding force
PULLING FORCE	100 tons at 1 st layer
HAULING SPEED	up to 20m/min
TOWING WINCH	60 tons holding force
PULLING FORCE	50 tons at 1 st layer
HAULING SPEED	10m/min – 20m/min
TUGGER WINCH	15 tons at 1 st layer
DECK CRANE FORWARD	Heila HLRM 230-4SL incl. winch; 10 tons single pull, 20 tons dual pull
DECK CRANE AFT	Heila HLRM 140-3S
DECK	Azobé deck covering
TOWING HOOK	Mampaey 45 tons SWL
SHARK JAWS	50 tons
TOWING PINS	Aft ship: and fore ship: hydraulic set
FENDERING	M-fendering on the corners, fendering pusbow, tires on the sides
ACCOMMODATION	
FACILITIES	Airconditioned accommodation for up to 6 persons
LIFE SAVING EQUIPMENT	life buoys, rafts, rescue boat for 8 persons
NAUTICAL COMMUNICATION	A3 compliant
DP SYSTEM	Radio Holland

REV	NO.	DATE	DESCRIPTION	BY	CHKD
A	1	10-07-2016	Issue 01		
B	1	10-07-2016	Issue 02		
C	1	10-07-2016	Issue 03		



MAIN DIMENSIONS:
 LENGTH o.a : 26.48m
 LENGTH mid : 24.50m
 LENGTH waterlin : 24.54m
 LOADLINE length : 23.65m
 BREADTH mid : 11.00m
 DEPTH at side : 3.20/3.70 m
 DRAFT max : 2.61 m


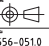
DECK EQUIPMENT:
 ANCHOR HANDLING-TOWING WINCH-100 TON
 ANCHOR HANDLING-TOWING WINCH-50 TON
 TUGGERWINCH-15TON
 CRANE: HEILA HLRM 230-4SL
 CRANE: HEILA HLRM 140-3S

PROPULSION:
 Main Engines 2x Caterpillar C32
 Total Power 1940 kW at 1800 rpm
 Propellers Ø 1850
 Bowthruster Ø950 - 250 kW
 Sternthruster Ø900 - 200 kW

ANCHOR EQUIPMENT:
 NR 600, Chapter 5, Section 4, Article 2, Equipment Number
 2x Anchor Very high holding power 312 Kg
 2x Chain D2 - Diameter Ø 17.5 mm, Length 137.5 mtr

CLASS:
 BUREAU VERITAS: HULL MACH, Unrestricted Nav,
 Multi-Purpose Special Service GMDSS Area A2

DECKLOAD : 6.0 t/m²
BV REGNUMBER : 3701TG

 NEPTUNE ENGINEERING RIVERPOLSK 988 - 3071EG HARDINGVELD-DEESINGEN/AM - Holland Tel: +31(0)184-621423, Fax: +31(0)184-612742		General Arrangement Eurocarrier 2611	
			1 B
scale 1:50 version 01/2016	scale 1:6-10/16 version 01/2016	556-0510	B



MultiCarrier 2611 | Tidal Pioneer

For more information, please contact us on:
 T +31 (0)184 621423 E info@neptunemarine.com W www.neptunemarine.com
 Version: V.01

