




MultiPontoon 3011 | Pontoon

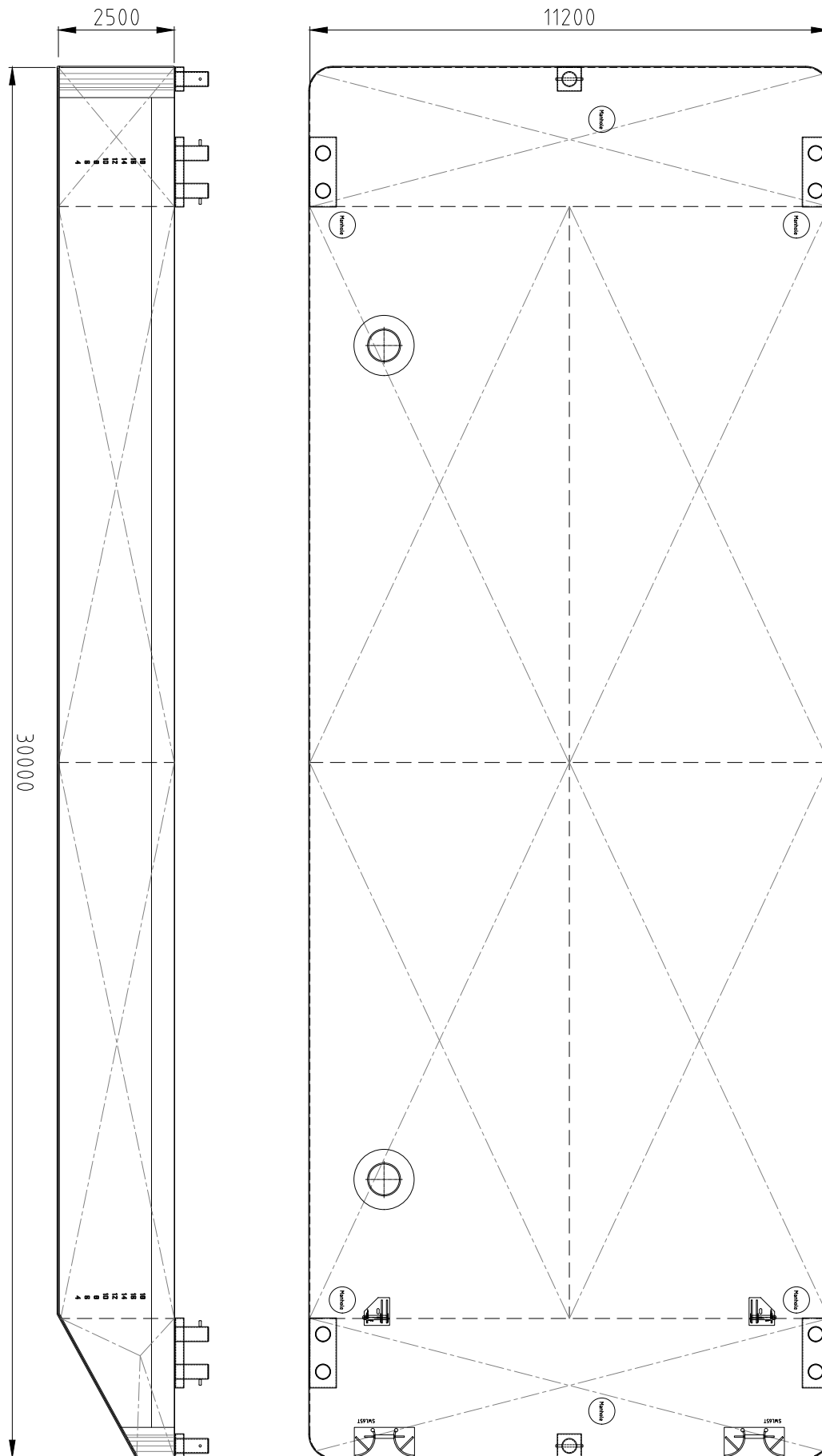


Neptune has got various vessels and pontoons available for sale or charter. To fulfil your operational demands, Neptune offers a wide range of deck equipment, including accommodation units, mooring equipment and cranes.



| | |
|------------------------|---|
| CLASSIFICATION | Bureau Veritas I  HULL Unrestricted Navigation Unmanned Towing |
| DIMENSIONS | |
| LENGTH O.A. | 30,00 meters |
| BREADTH MLD. | 11,20 meters |
| DEPTH AT SIDE | 2,50 meters |
| MIN. DRAUGHT | 0,47 meters |
| MAX. DRAUGHT | 1,93 meters |
| GROSS TONNAGE | 208 |
| NET TONNAGE | 62 |
| CONSTRUCTION | |
| DECK PLATE THICKNESS | 10 mm |
| SHEERSTRAKE THICKNESS | 25 mm |
| NUMBER OF COMPARTMENTS | 6 void spaces |

| | |
|----------------------------|--|
| CAPACITY | |
| CARGO CAPACITY | 500 tons |
| DECK LOAD | 6 tons m ² |
| STANDARD OUTFITTING | |
| BOLLARDS | 4 x double bollards |
| SPUD CANS | 2 x at SB side |
| MANHOLES | Flush type manholes |
| TOWING BRACKETS | 2 x SMIT brackets at the bow |
| OPTIONS | |
| TOWING ARRANGEMENT | Towing bridle with chains and emergency towing arrangement |
| SPUD POLES | Spuds with a diameter of 609 mm |
| SPUD HANDLING EQUIPMENT | Hydraulic cylinders |
| DECK EQUIPMENT | Mooring equipment and cranes |



MultiPontoon 3011 | Pontoon

For more information, please contact us on:
 T +31 (0)184 621 423 E info@neptunmarine.com W www.neptunmarine.com
 Version: V.01

