



NP 459 | Multi Purpose Pontoon

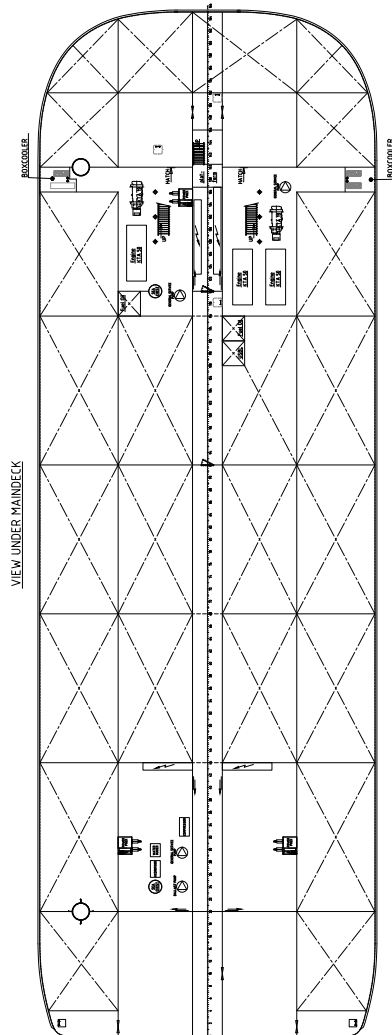
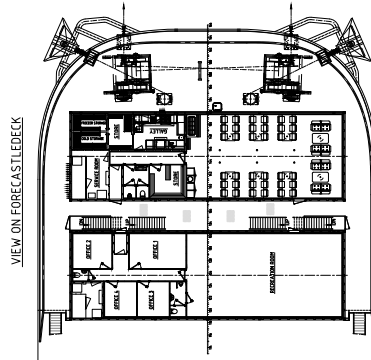
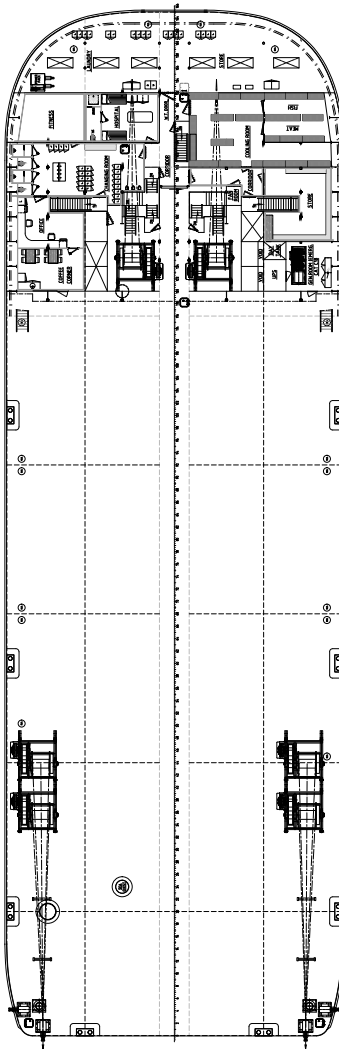
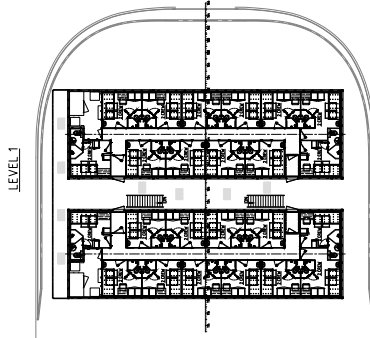
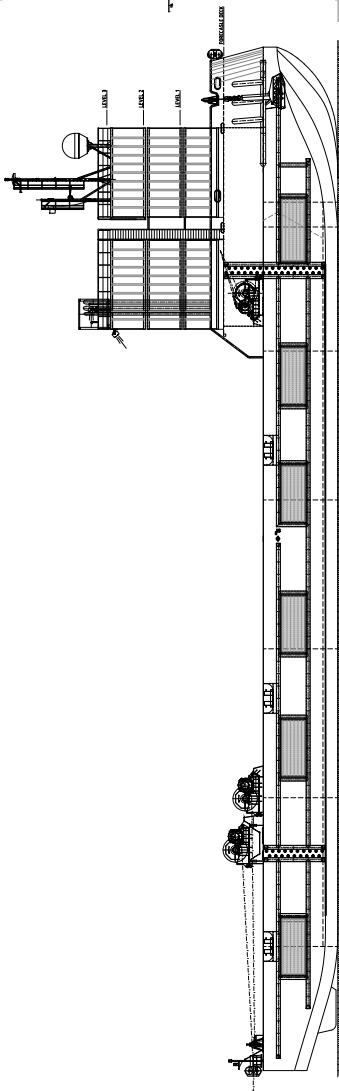
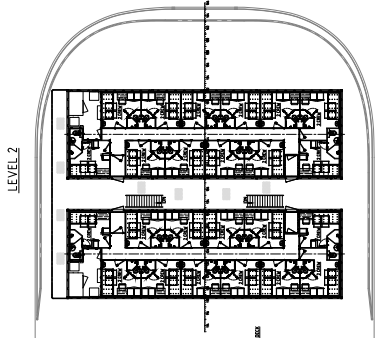
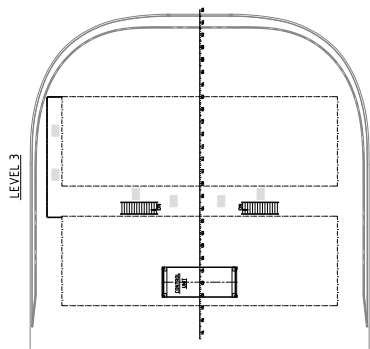


This multi purpose pontoon can be equipped to fulfill a broad range of operations. The free deck space in combination with the large accommodation offers many possibilities for all kinds of operations including salvage, offshore accommodation and renewables support.



CLASSIFICATION	Bureau Veritas I ✕ HULL ✕ MACH ✕ AUT-UMS Special service- multipurpose vessel, no propulsion, CPS (BWT), Inwater survey Unrestricted Navigation Max. 96 Persons on board
DIMENSIONS	
LENGTH O.A.	82,50 meters
BREADTH MLD.	27,00 meters
DEPTH AT SIDE	6,00 meters
PERFORMANCES	
CARGO CAPACITY	4000 ton
DECK LOAD MAX.	20 ton/m ²
AUXILIARIES	
GENERATOR SETS	3x Cummins KTA 50 D (1291 kW) 2x Cummins KTA 19 D (485 kW) 1x Cummins 6CTA 8.3 (207 kW)
TOTAL E-POWER	5050 kW
FUEL TRANSFER SYSTEM	50 m ³ /hr @ 5,2 bar
FRESH WATER SYSTEM	50 m ³ /hr @ 5,2 bar

TANKS	
FUEL OIL	200 m ³
FRESH WATER	66 m ³
SEWAGE	59 m ³
DECK LAY-OUT	
MOORING SYSTEM	8 x 60 ton CT winches at 1st layer
PULLING FORCE	120 ton hold at 1st layer
DRUM STORAGE	Each winch up to 1000 m Ø48 mm
ACCOMMODATION	
FACILITIES	Airconditioned accommodation for 96 persons in 48 cabins including: - 4 offices - 1 recreation room - 1 control room
SAFETY EQUIPMENT	Safety equipment and life rafts for max. 96 P.O.B.
OPTIONS	
CRANE	Fixed or crawler type
CAROUSEL	Up to a diameter of 24 meters
THRUSTERS	6x thruster



NP 459 | Multi Purpose Pontoon