


Multi Tender 3106 | Crew tender

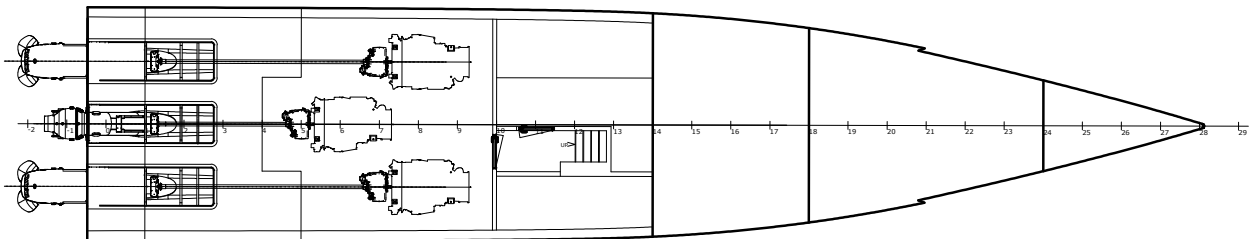
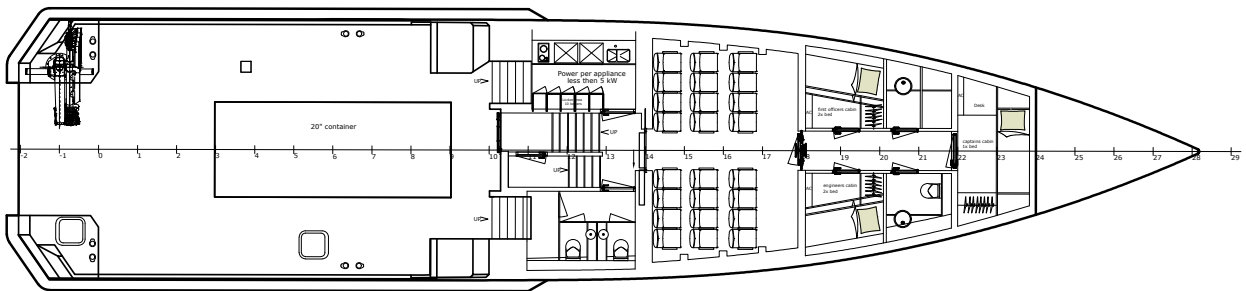
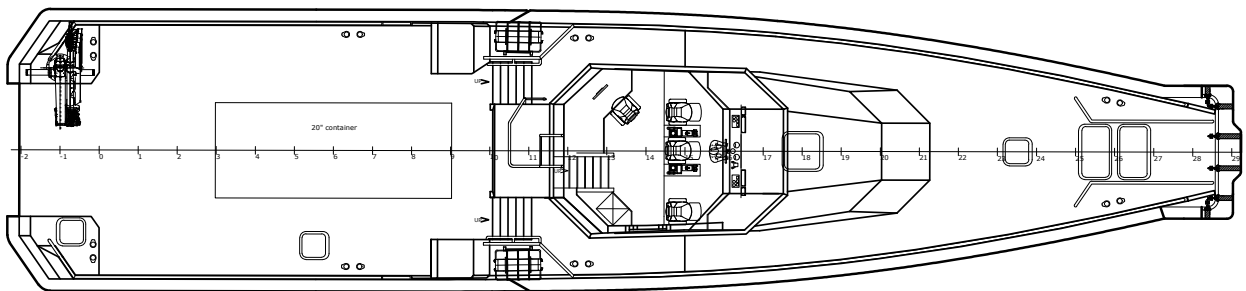
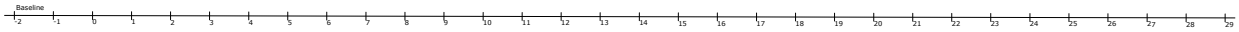
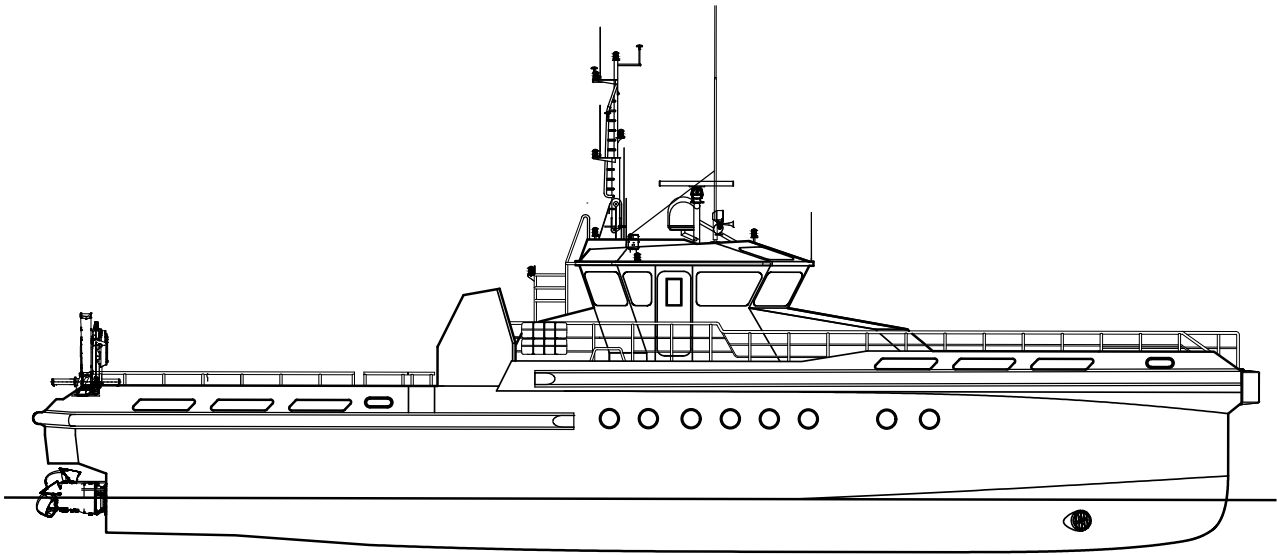


High performance crew transfer vessels for moving offshore personnel and light cargo in safety and comfort



CLASSIFICATION	Bureau Veritas I  HULL • MACH • High Speed Cat A, Craft, 24 passengers
CONSTRUCTION	Aluminium
DIMENSIONS	
LENGTH O.A.	31,30 meter
BREADTH MLD.	6,14 meter
DEPTH AT SIDE	6,57 meter
DRAFT	1,55 meter
PERFORMANCES	
SPEED	34 knots
PROPULSION	
MAIN ENGINES	3 x Caterpillar C32 TTA
TOTAL POWER	3 x 1.066 kW bij 2.300 RPM
JETS	3 x Rolls-Royce, Kamewa water jets
AUXILIARIES	
GENERATOR SETS	2 x 107 kVA
BOW TRUSTER	Hydraulic drive

TANKS	
FUEL OIL	23,5 m ³
FRESH WATER	2,5 m ³
DECK LAYOUT	
FENDERING	PU fendering, 300 mm
DECKSPACE	20 ft container
ACCOMMODATION	
FACILITIES	Seats for 24 persons, captains hut, crew cabin, bathroom facilities, galley (air conditioning)



Multi Tender 3106 | Crew tender