
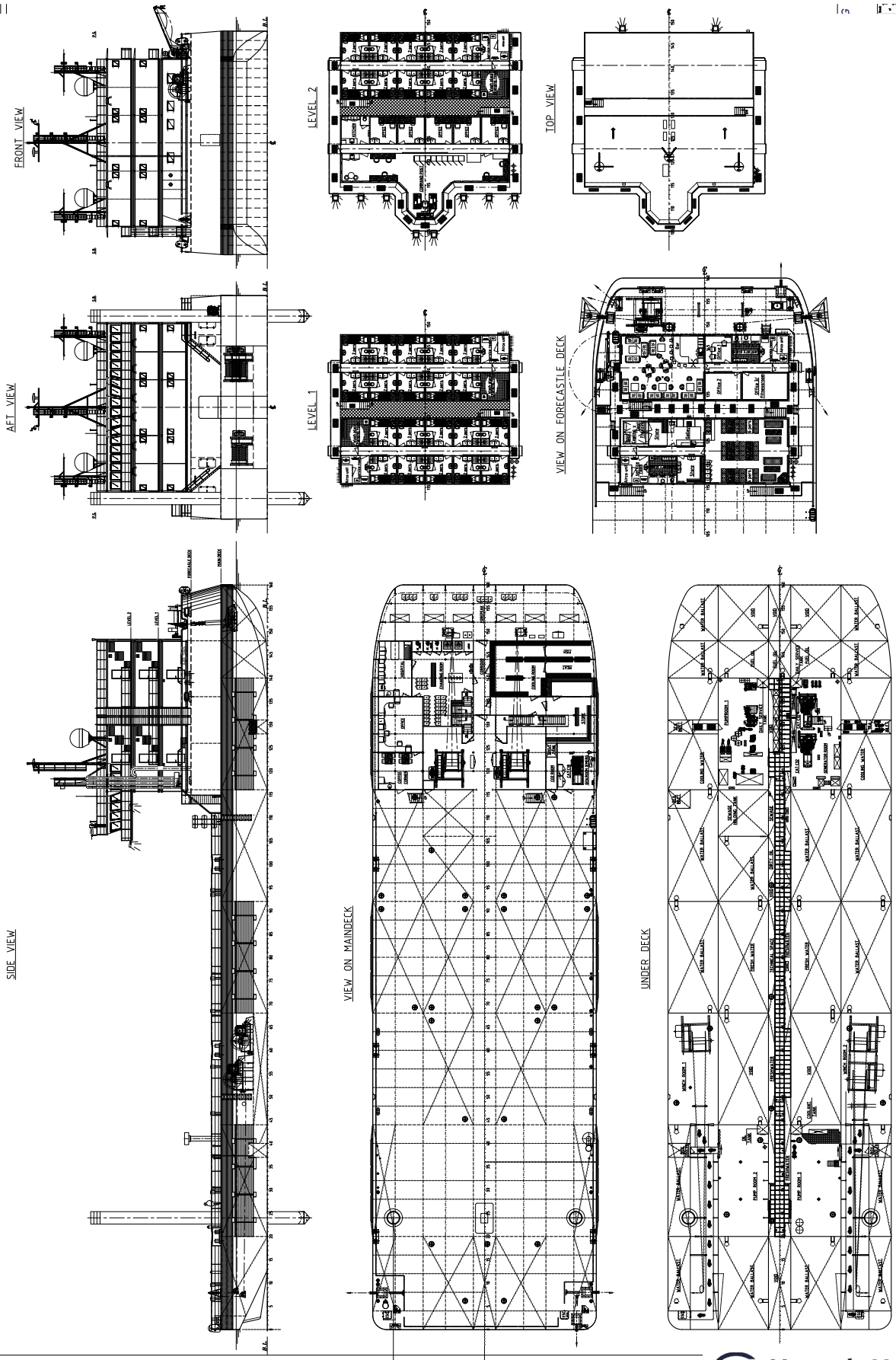


This multi purpose pontoon can be equipped to fulfill a broad range of operations. The free deck space in combination with the large accommodation offers many possibilities for all kinds of operations including salvage, offshore accommodation and renewables support.



CLASSIFICATION	Bureau Veritas I  HULL Unrestricted Navigation Unmanned Towing Max. 60 Persons on board
DIMENSIONS	
LENGTH O.A.	80,00 meters
BREADTH MLD.	24,00 meters
DEPTH AT SIDE	5,00 meters
DRAUGHT MAX.	3,89 meters
DRAUGHT MIN.	1,95 meters
FREEBOARD MIN.	1,14 meters
GROSS TONNAGE	3665
NET TONNAGE	1099
PERFORMANCES	
CARGO CAPACITY	4500 ton (2800 ton with max. consumables)
DECK LOAD MAX.	15 ton/m ²
AUXILIARIES	
GENERATOR SETS	Parallel configuration
TOTAL E-POWER	1950 kW
FUEL TRANSFER SYSTEM	50 m ³ /hr @ 4 bar
FRESH WATER SYSTEM	50 m ³ /hr @ 4 bar

TANKS	
FUEL OIL	600 m ³
FRESH WATER	950 m ³
SEWAGE	150 m ³
FREE DECK SPACE	Approx. 1350 m ²
BALLAST SYSTEM	Yes
MOORING SYSTEM	6 x 60 ton CT winches at 1st layer 3 winches below deck 2 winches below accommodation 1 winch on forecastle deck
PULLING FORCE	120 ton hold at 1st layer
DRUM STORAGE	Each winch up to 1000 m Ø48 mm
SPUD CANS	2 x at SB side
SPUD POLES	Spuds with a diameter of 1200 mm
ACCOMMODATION	
FACILITIES	Airconditioned accommodation for 60 persons in 30 cabins including: - 9 offices - 1 recreation room - 1 control room
SAFETY EQUIPMENT	Safety equipment and life rafts for max. 60 P.O.B.
OPTIONS	
CRANE	Fixed or crawler type
CAROUSEL	Up to a diameter of 24 meters



NP 289 | Multi Purpose Pontoon

For more information, please contact us on:
 T +31 (0)184 621423 E info@neptunmarine.com W www.neptunmarine.com
 Version: V.01

