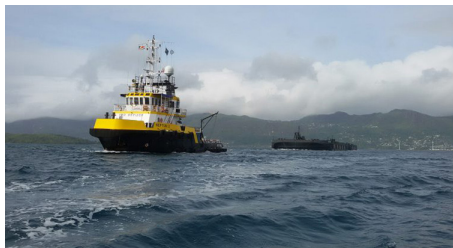
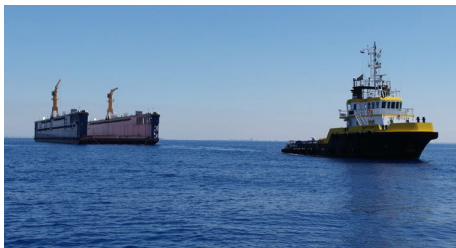

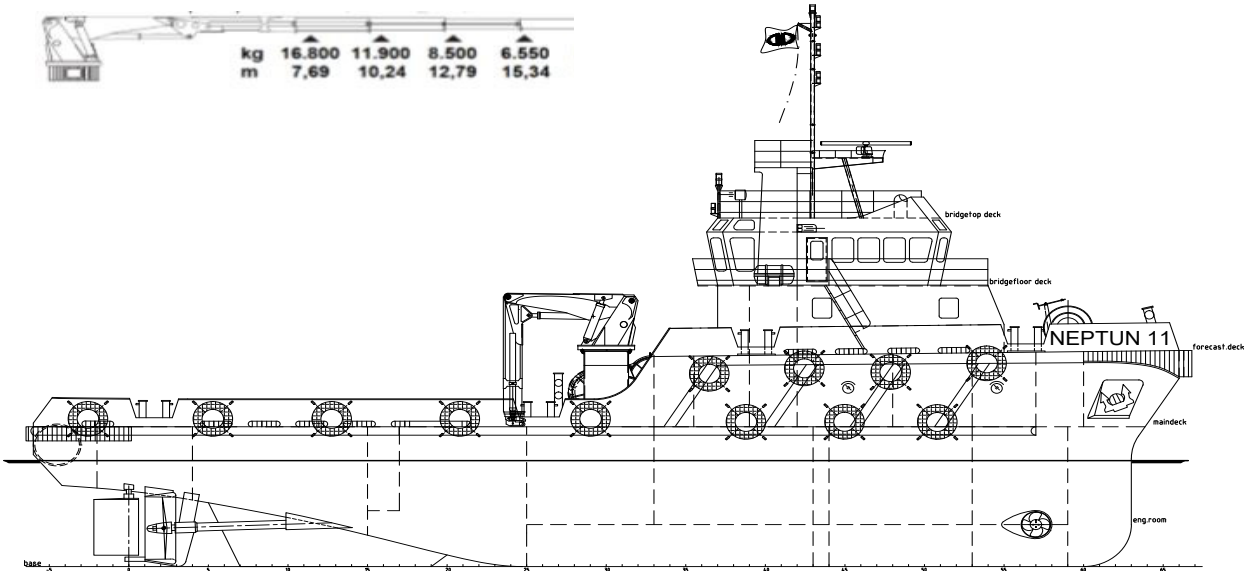




Neptun 11 | Anchor Handling Tug / Utility Vessel



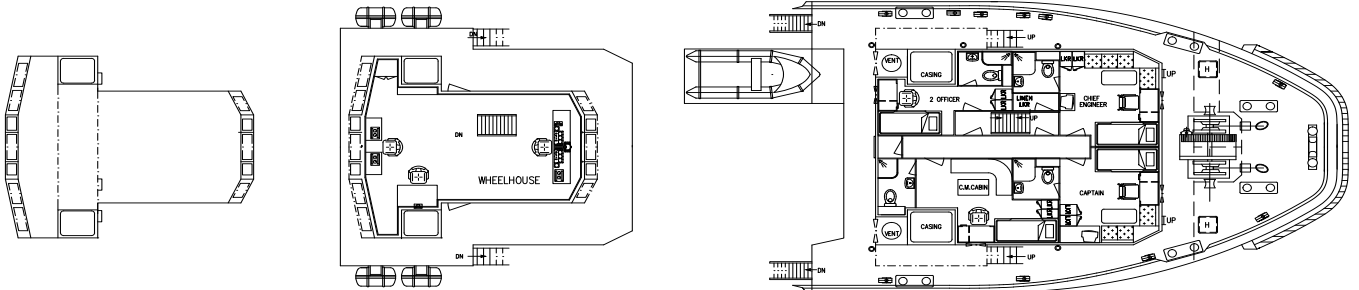
CLASSIFICATIONS		Bureau Veritas  HULL  MACH AUT UMS Unrestricted Navigation	MACHINERY / PERFORMANCES	
GENERAL		U.K. Gibraltar	BOLLARD PULL	42,8 tons
DIMENSIONS			MAX. SPEED	12,0 knots
LENGTH O.A..	36,00 meters		SAILING RADIUS WITHOUT TOW	14.000 miles
BEAM / WIDTH.	10,40 meters		SAILING RADIUS WITH TOW	7.000 miles
DEPTH AT SIDES	5,00 meters		MAIN ENGINES	2x Cummins KTA-50-M2
DRAFT (MIN. - MAX.)	3,80- 4,15 meters		TOTAL OUTPUT	2.388 kW = 3.244 BHP
AIR DRAFT	17 meters		PROPULSION	Twin fixed propellers in nozzles
GROSS TONNAGE	459 GT		BOW THRUSTER	320 kW, van Ballegooy
NET TONNAGE	137 NT		GENERATOR SETS	2x Cummis AQM11-D(M) 1x Cummins 6CTA8.3-D(M)
DECK CARGO CAP.	6x 1 TEU, 90 tons		GENERATOR POWER	2x 240 kW + 1x 136 kW / 400 V
CLEAR DECK AREA	120 m ²		HYDRAULIC POWERPACK	ME HPU-090426 / 2x 30 kW
CARGO DECK LOAD	5 tons per m ²		DECK EQUIPMENT	
TANK CAPACITIES / TRANSFER			WINCH	ME Double Drum Waterfall
FUEL OIL / GASOIL	305.000 liters		ANCHOR HANDLING	Pull Force 50T, Holding F. 100T
FRESH WATER	100.000 liters		TOWING DRUM	Pull Force 50T, Holding F. 100T
FRESH WATER GENERATOR	2,5 m ³ / day		TOW WIRES	2x 800 meters
TRANSFER OF FUEL OIL	50 m ³ / hr		TOW WIRES DIAMETER	48 millimeters
TRANSFER OF FRESH WATER	20 m ³ / hr		TUGGERWINCH	5 tons
ACCOMODATION			TOWING PINS	2x SWL 200 ton
FACILITIES	Airconditioned, 9 berths		WIRE CATCHER	2x SWL 200 ton
			STERN ROLLER	SWL 200 ton
			MAIN MARINE DECK CRANE	170 t/m
			MAXIMUM LIFT CAPACITY	See next page



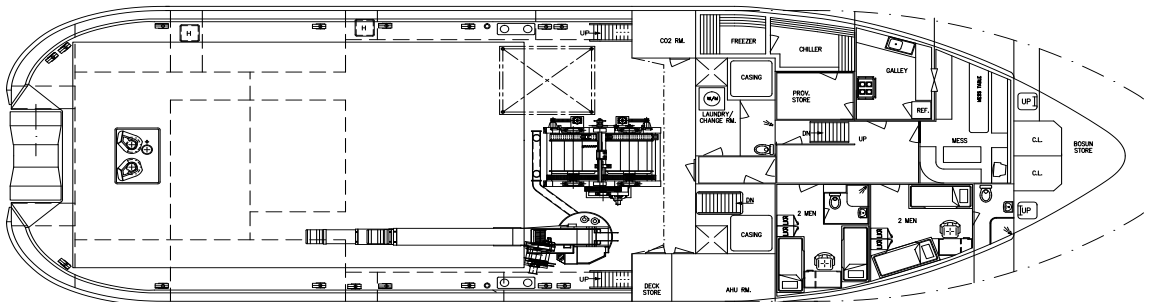
BRIDGETOPDECK

BRIDGEFLOORDECK

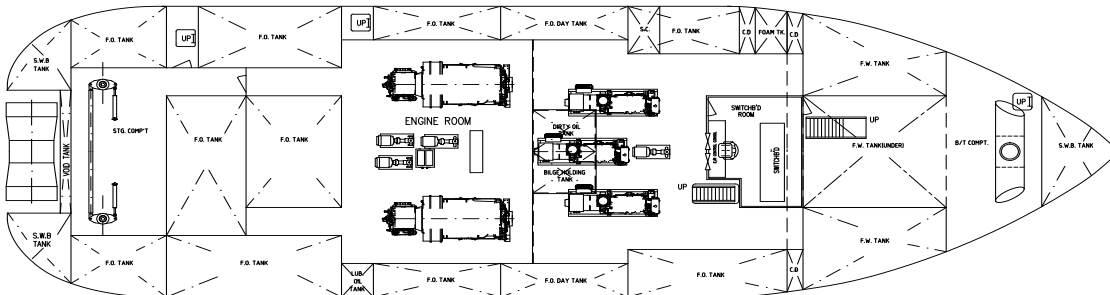
FORECASTLEDECK



MAINDECK



ENGINE ROOM



Neptun 11 | Anchor Handling Tug / Utility Vessel

For other configurations, please contact us:

T +31 (0)184 621 423 E info@neptunmarine.com W www.neptunmarine.com

Version: V.02

